



CARLOR
ENGINEERING

HISTORY

Carlor Engineering, Belgian manufacturer, it is 10 years experience in the development of electric coolant heaters for all types of water-cooled engines. Carlor Engineering quickly became the leader in this field with the assets of a small company: reactivity, adaptation to market demand, quality and reliability.

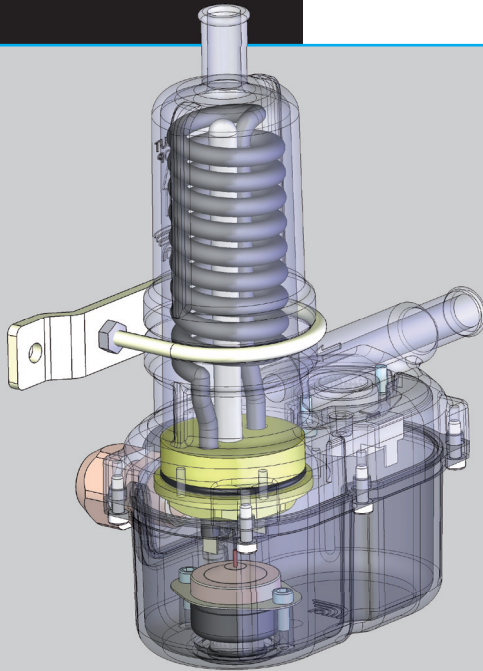


THERMOCAR

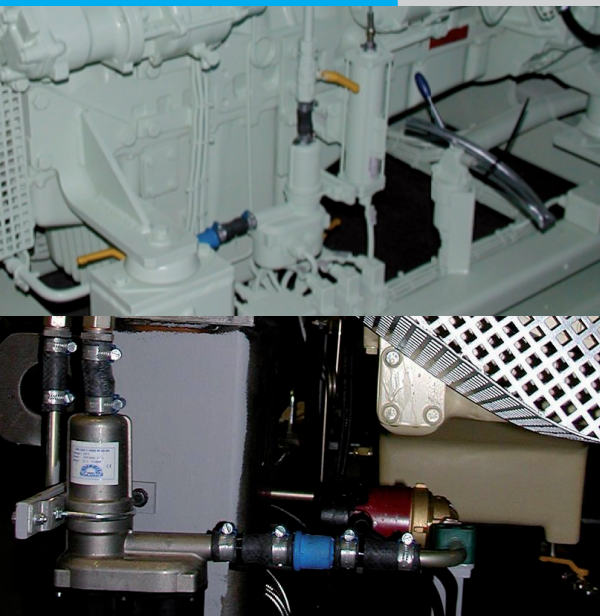
Tank-style engine pre-heating systems Without pump

These system are electric coolant heaters for all types of water-cooled engines. The coolant is then heated and pushed back by a thermo-siphon process into an opening near the top of the engine. This ensures an easy full power start whatever the ambient temperature and avoids cold start mechanical damage. They are suited for all industrial applications, either stationary (generator sets) or mobile (vehicles, trucks, vans, ambulances).

These heaters are very compact, maintenance free and easy-to-install. The system has the following advantages : Fuel savings, decreasing pollution, reduced engine wear, no more difficult cold starts, vehicle cab heater instantly operational.

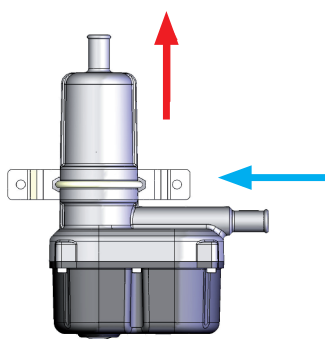


APPLICATIONS



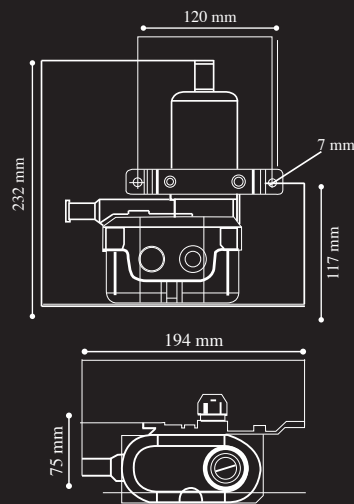
Product benefits

- Heavy aluminium injected body 100% recyclable
- Heating element with top-quality shielding and low specific power, increasing its life-cycle even in contact with water charged with scale
- Control thermostat with high cutout power for an optimized life cycle
- Safety thermostat with manual re-set option to protect the heating element if water levels in the circuit are low or if the control thermostat fails
- High waterproofness
- Easy replacement of parts
- Two years warranty on labour and spare parts



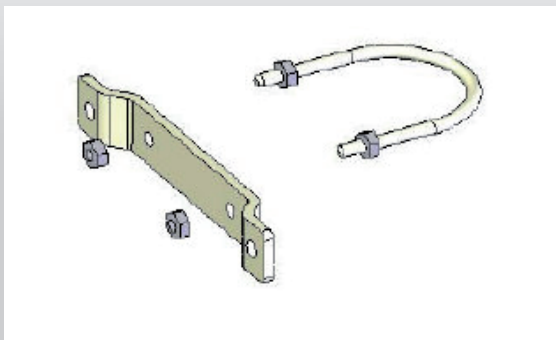
THERMOCAR

Tank-style engine pre-heating systems
Without pump

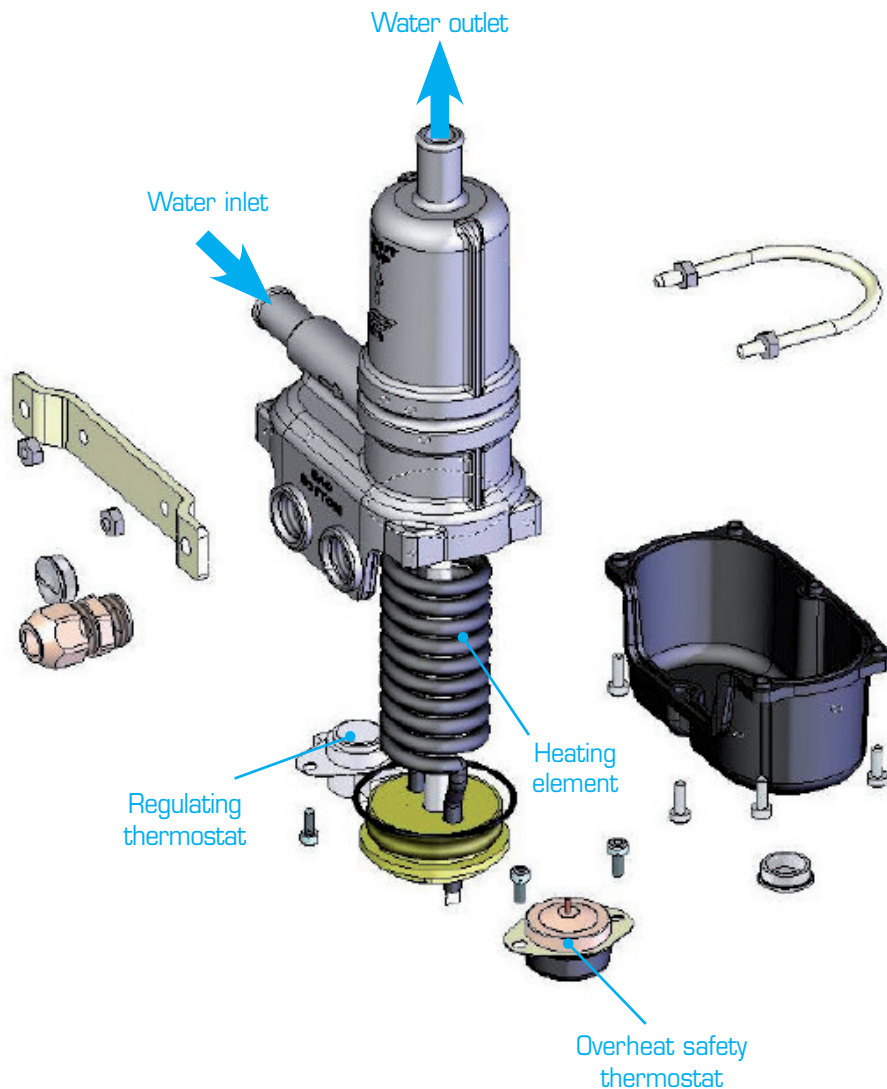
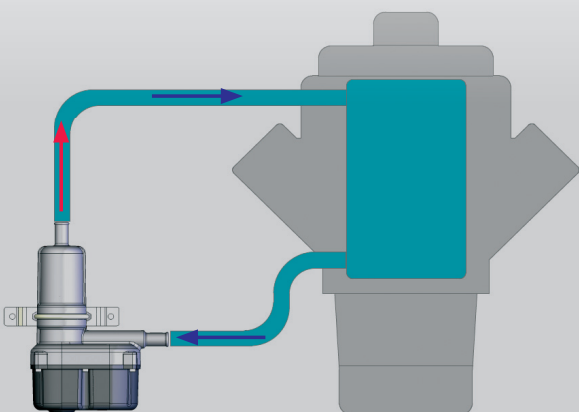


Weight: ThermoCar: 1,4 Kg

DELIVERED WITH FIXATION KIT.



INSTALLATION DIAGRAM



HEATING UNIT

- Aluminium AS9U3 injected heating unit with impregnation treatment
- PA66 protection cover
- 200 cm power cable
- 5/8" (15 mm) water outlet and inlet

WATER TEMPERATURE CONTROL THERMOSTAT

- Regulation thermostat rated at 25A, 100.000 cycles
- Available temperature intervals :
 - 35°C – 50°C / 95°F – 122°F
 - 32°C – 40°C / 90°F – 104°F

SAFETY THERMOSTAT

- Security thermostat with manual reset, rated 25A, 6.000 cycles (110 °C / 230°F)

HEATING ELEMENT

- Low watt density heating element made of Incoloy 800 (7,5W / cm² → 1,5Kw) what increases its lifetime and those of the coolant
- Available powers: from 0.5 Kw to 2Kw
- Available voltages: 120V, 230V

